

Zimzala K9 Training

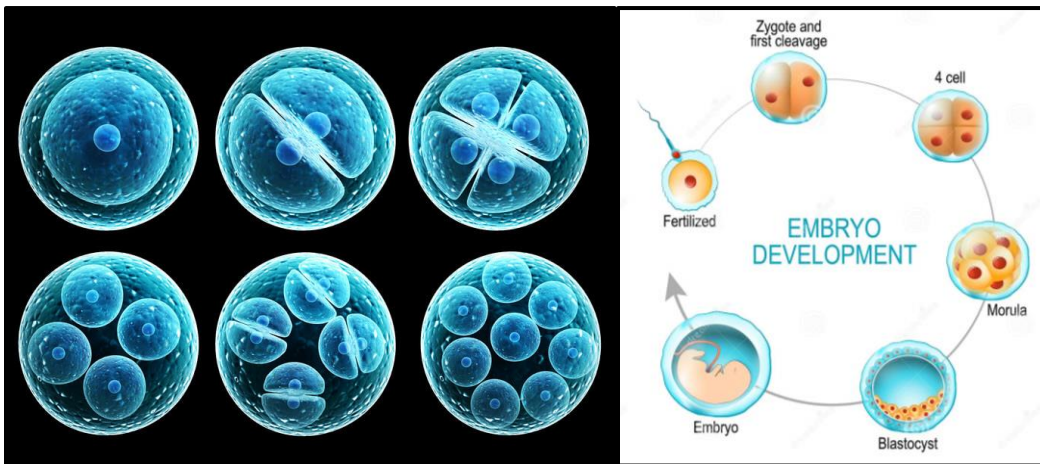
Zimzala Canine Estate
Broadway Boulevard, R44
Stellenbosch, 7614
amanda@zimzala.co.za
082 579 2831

Weekly Pregnancy Progression

Week 2

END OF CYCLE/SEASON

At this point, generally day 8, the bitch is out of season. She will enjoy a gentle wash and grooming. She should act as normal with no physical observable changes. However, some changes are happening, though we can't see it. The eggs will divide, from 4 to 64, transform into blastocytes and eventually develop into embryos. All the while the embryos are traveling towards the uterus. Here they are safe and protected.



Until day 35 it is important to monitor her weight. You don't want her to gain weight at this point in time, as obesity can really be a set back to healthy development and future delivery. However, the bitch must also not lose any weight at this time, as it can be detrimental to the formation of the embryos. If her weight begins to drop, take her to the vet without delay.

During week two it is all about maintenance and continuing as before, ensuring your bitch receives optimal quality nutrition and care.